



South-East
Regional Health Authority
Régie régionale de la santé
Sud-Est

Research Services Impact on Ethics Oversight: Does Its Position in an Organization Make a Difference?

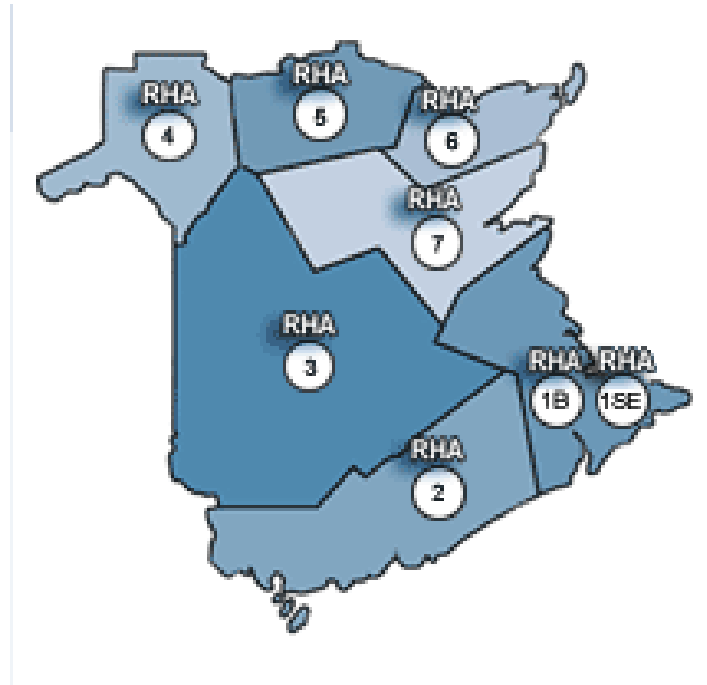
Michelina Mancuso, Manager Research Services
ARECCI Conference 2008

SERHA ... Leading in a healthy and vibrant community

RRSSE ... Chef de file d'une communauté dynamique et en santé



South-East
Regional Health Authority
Régie régionale de la santé
Sud-Est



SERHA ... Leading in a healthy and vibrant community

RRSSE ... Chef de file d'une communauté dynamique et en santé



South-East
Regional Health Authority
Régie régionale de la santé
Sud-Est

**Health Services Planning
and QI**

Research Services

Utilization

Patient Safety

SERHA ... Leading in a healthy and vibrant community

RRSSE ... Chef de file d'une communauté dynamique et en santé



South-East
Regional Health Authority
Régie régionale de la santé
Sud-Est

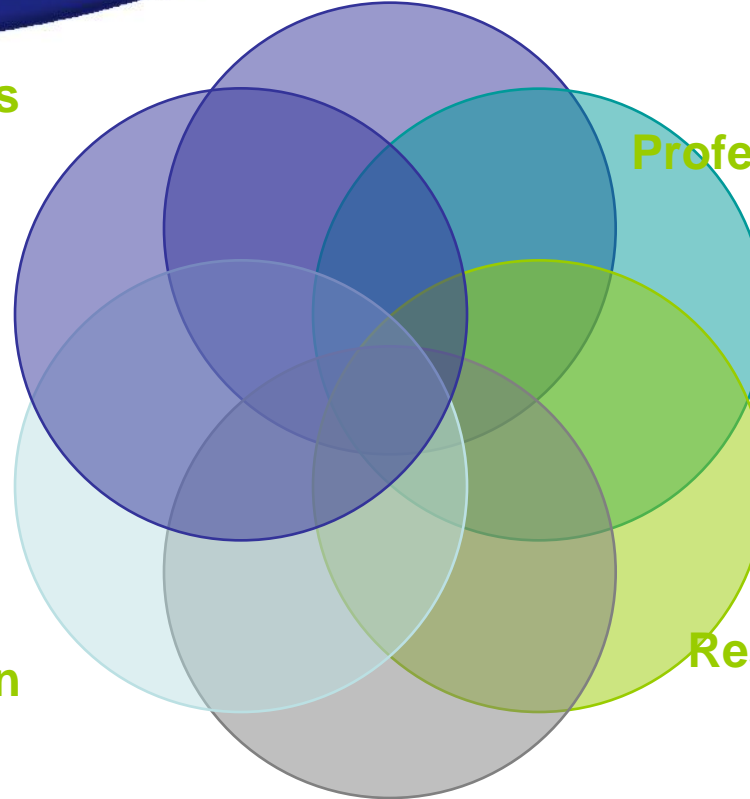
Health Services Planning & QI

Model:

SERHA RESEARCH SERVICES

**Programs/Services
& Committees**

**Health
Professionals & Their Groups**



Medical Education

**Researchers & Research
Co-ordinators**

Research Ethics Board

External Partners:

- Universities
- Pharmaceutical & Biomedical Industry
- Governments/Other Health Authorities
- Research Agencies
- Community Colleges



Research Services Collaboration with Quality Improvement

Roles and Responsibilities at various levels of the organization:

- Teaching the Algorithm part of both QI training sessions and Research Ethics teaching sessions.
- SERHA REB approved and supported Algorithm
- HSPUR and IM Committee to act as monitoring and information exchange to ensure facility wide communication of algorithm

“ It must be made part of the organizational culture ”

SERHA ... Leading in a healthy and vibrant community

RRSSE ... Chef de file d'une communauté dynamique et en santé



South-East
Regional Health Authority
Régie régionale de la santé
Sud-Est

**Key Committee for
Organizational
Perspective Success**

TERMS OF REFERENCE
**HEALTH SERVICES PLANNING, UTILIZATION, RESEARCH
AND
INFORMATION MANGEMENT COMMITTEE**

SERHA ... Leading in a healthy and vibrant community

RRSSE ... Chef de file d'une communauté dynamique et en santé



South-East
Regional Health Authority
Régie régionale de la santé
Sud-Est

Purpose

The mandate is to support enhancement in population health outcomes and health care services through knowledge transfer and integration of planning, utilization, quality improvement, information management and research.

SERHA ... Leading in a healthy and vibrant community

RRSSE ... Chef de file d'une communauté dynamique et en santé



Functions

- To promote and support evidence informed decision-making.
- To identify and prioritize information needs for decision-makers.
- To provide advice and recommendations to the SERHA E-Health Committee on the management of data and information.
- To develop, implement and maintain an integrated information management system to meet the information needs of both internal and external customers, *i.e. support Balanced Scorecard activities*), *i.e.* Sharepoint and Balanced Scorecard.
- To promote timely collection, analysis and interpretation of data.
- To support the development of relevant, outcome-oriented and measurable indicators.
- To improve access to and understanding of information.
- To build capacity to support health services research activity.
- **To facilitate enhanced monitoring and accountability.**

SERHA ... Leading in a healthy and vibrant community

RRSSE ... Chef de file d'une communauté dynamique et en santé



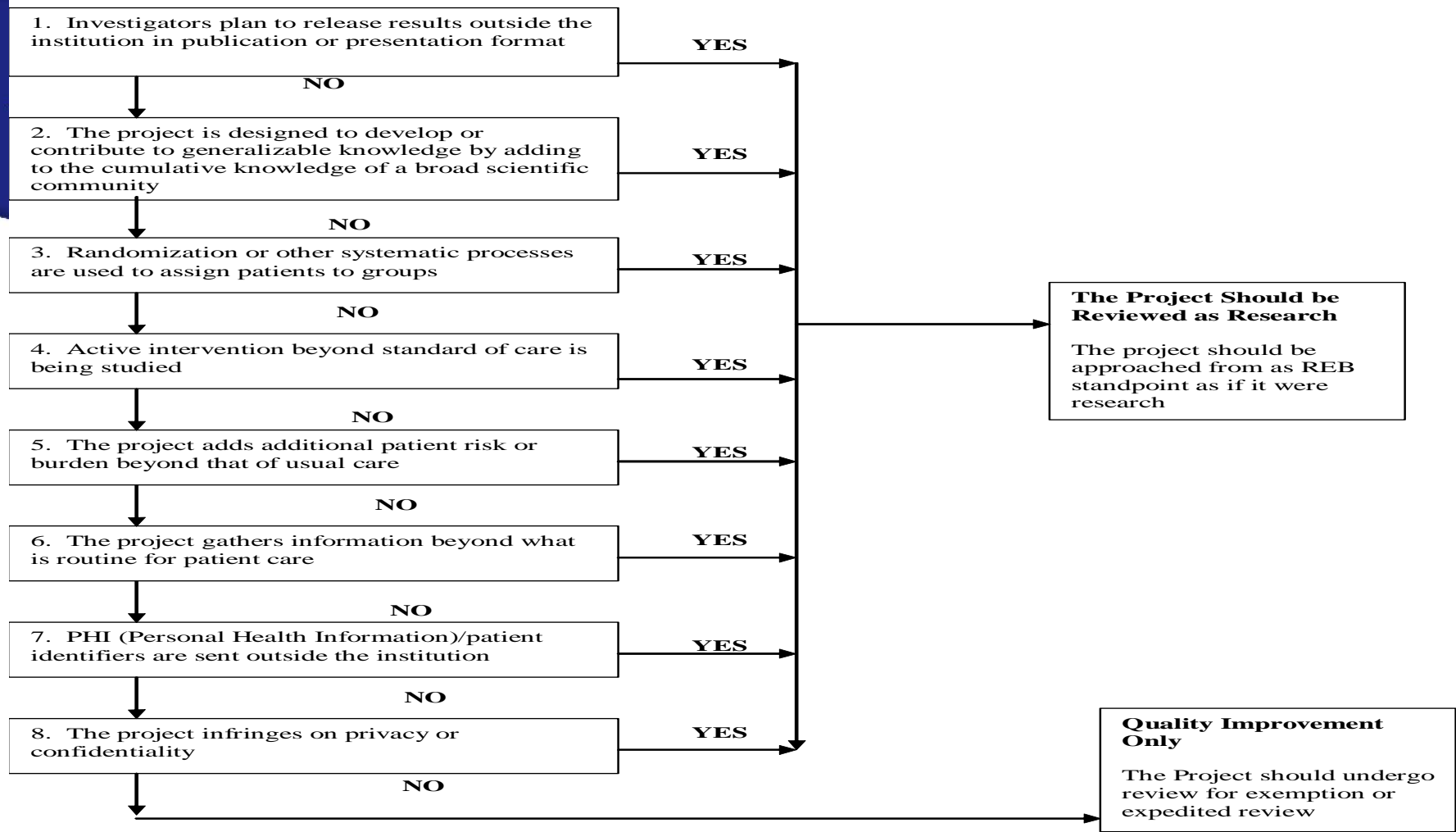
South-East
Regional Health Authority
Régie régionale de la santé
Sud-Est

Membership

***Vice President Planning & Professional Services, Chair
Chief Financial Officer
Chief of Staff or Designate
Chief Information Officer
Chief Nursing Officer
Director,
Health Records/Admitting/Telecommun./Central Scheduling
Director, Health Services Planning and Quality Improvement
Director, Human Resources
Manager, Clinical Administrative Information
Manager, Research Services
Utilization Management Coordinator
Workload Measurement Coordinator
Manager, Library Services
Program Administrative Director
Community/Facility Representative
Guests as required***

SERHA ... Leading in a healthy and vibrant community

RRSSE ... Chef de file d'une communauté dynamique et en santé



SERHA ... Leading in a healthy and vibrant community

RRSSE ... Chef de file d'une communauté dynamique et en santé



Examples of Ethical Oversight

Example 1: Algorithm for Warfarin Adjustment for Geriatric Population

- Started as a QI project idea but group who works on clinical order sets had concerns that it was research.
- Algorithm could be presented outside SERHA which could have patient safety implications.
- Resolved using algorithm

SERHA ... Leading in a healthy and vibrant community

RRSSE ... Chef de file d'une communauté dynamique et en santé



Examples of Ethical Oversights

Example 2: Subcutaneous Insulin Clinical Order Set

- Started as a QI idea.
- Quickly realized no substantive research was available
- Flags went up during the pilot
- Project went for Research Ethics Review



South-East
Regional Health Authority
Régie régionale de la santé
Sud-Est

Thank you

Algorithm Reference:

Johnson et al. *A survey of academic medical centers to distinguish between quality improvement and research activities.*

Q Manage Health Care. 2006: Vol 15, No 4. pp. 215-220

SERHA ... Leading in a healthy and vibrant community

RRSSE ... Chef de file d'une communauté dynamique et en santé