

The Creation of a Quality Initiative Review Framework in Pediatric Rehabilitation

Shawna Gutfreund, MA
Research Ethics & Special Projects
Coordinator

Judy Maheu, B.Sc.O.T., M.H.Sc.
Director Quality & Best Practice

An Introduction to Bloorview Kids Rehab

- Canada's largest children's rehabilitation hospital
 - Provides outpatient care to more than 6,500 children and youth
 - Admits over 600 inpatients
- Canada's first teaching hospital in children's rehabilitation
- Affiliated with the University of Toronto
- Home to the Bloorview Research Institute
 - 20 Scientists, 20 Graduate Students
 - Research focused on:
 - *enhancing care*
 - *developing assistive technologies*
 - *evaluating barriers restricting inclusion of children with disabilities*

Background

- Issues/Challenges
 - No guidance or direction for staff
 - Not clear how to distinguish research from other initiatives
 - REB seen as barrier
 - REB reviewing initiatives that are not research
 - Do not know the extent of the problem
- Agreement that initiatives involving human participants requires an ethical and science/methodological review

Creating a Solution

- Method for distinguishing research from other initiatives
- New Initiative Process
- Review process for New Initiatives
- Policy on New Initiatives
- Roll Out process and policy
- Educate staff about New Initiatives

Solution

Work in progress

Solution: Distinguishing Research from Other Initiatives - Literature & Other Organizations

Criteria to distinguish research from other initiatives:

- Level of risk
- Deviation in standard of care
- Control group
- Publishing results
- Funded

These criteria, however, are not applicable to Bloorview

Solution: Distinguishing Research from other Initiatives – Bloorview's Approach

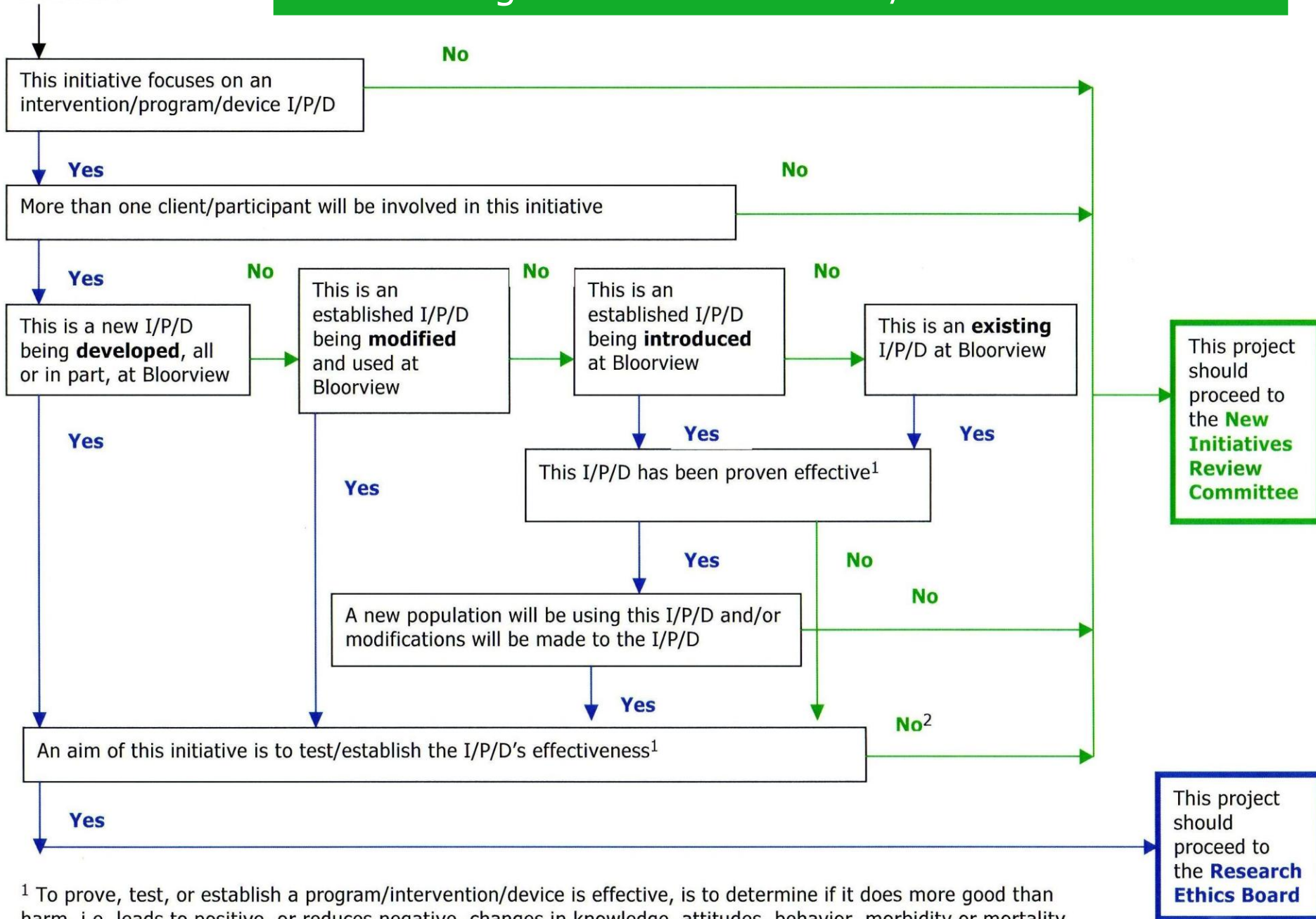
Criteria used to distinguish research from other initiatives:

- Process improvement
- A new intervention
- A new population for an existing program/intervention
- A new program
- Modifications to an existing program/intervention
- More than one participant
- Testing/evaluating **effectiveness**

Not all criteria are mutually exclusive

Decision Algorithm for Research/New Initiatives

Start Here

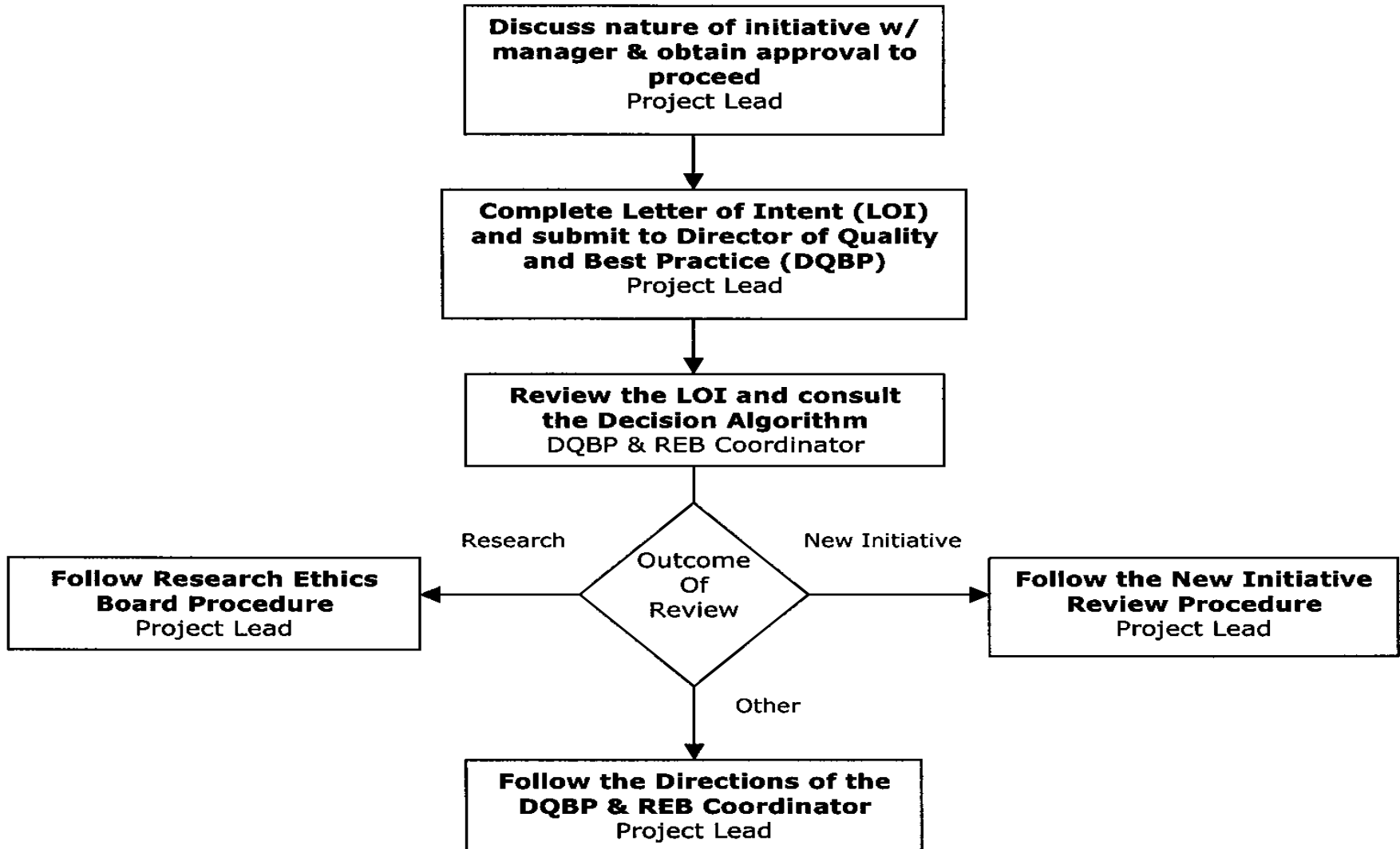


¹ To prove, test, or establish a program/intervention/device is effective, is to determine if it does more good than harm, i.e. leads to positive, or reduces negative, changes in knowledge, attitudes, behavior, morbidity or mortality

² For example evaluating whether an I/P/D is suitable/feasible at Bloorview

Solution: New Initiative Process

New Initiative Process



Solution: New Initiative Review Procedure

1. Complete the *Application for New Initiative Form*
 - Description of Initiative
 - Collection Methods
 - Budget
 - Participants
2. Reviewed by the New Initiative Review Committee
 - Expertise of the committee:
 - Ethics
 - Privacy
 - Clinical
 - Methodology
 - Quality
 - *Communication*
3. Annual Review?
4. Program Completion Report?

Next Steps

- Sharing with appropriate individuals at Bloorview
- Piloting
- Fine tuning
- Incorporating knowledge gained from ARECCI conference
- Develop Policy
- Educating Staff
- Roll out
- Evaluate Process
- Develop tracking/monitoring system

Acknowledgments

Working Group Members

- Judy Maheu – Director of Quality and Best Practices
- Shawna Gutfreund – REB and Special Projects Coordinator
- Rohini Soni – Director of Research Operations
- Barbara Almos – Privacy Officer
- Cynthia Tam – Occupational Therapist
- Maria McDonald – Bioethicist
- Janet Woodhouse – Occupational Therapist
- Carolyn McDougall – Occupational Therapist

Ad hoc members:

- Colin Macarthur – VP Research
- Joan Ferguson – VP Program and Services

Consulted

- Program Directors
- Bloorview Kids Foundation
- Professional Practice Leaders



Thank You

From disability to possibility