



Western
Health

The Experience of a Rural Research Ethics Board: Overcoming Challenges

Presenters:

Darlene Hutchings BA MHSc

Sheila Parsons RN BN MN

Alberta Research Ethics Community Consensus Initiative

May 5, 2008

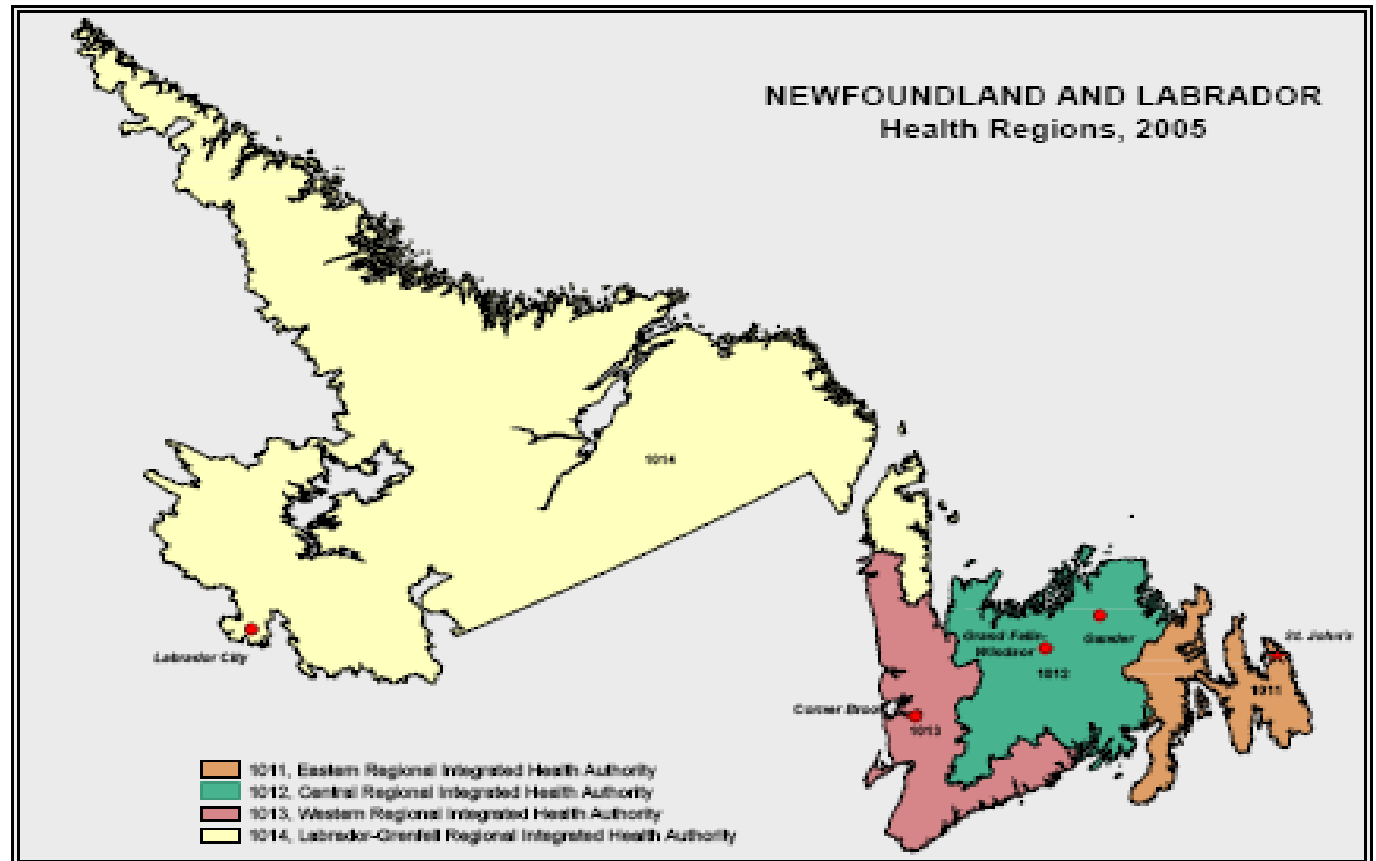


Objectives

- To share background information on the Research Ethics Board and the area it serves
- To identify strengths and challenges in the ethical management of research, quality improvement (QI), and quality assurance (QA) initiatives
- To review implementation strategies and future directions



Newfoundland & Labrador



Setting

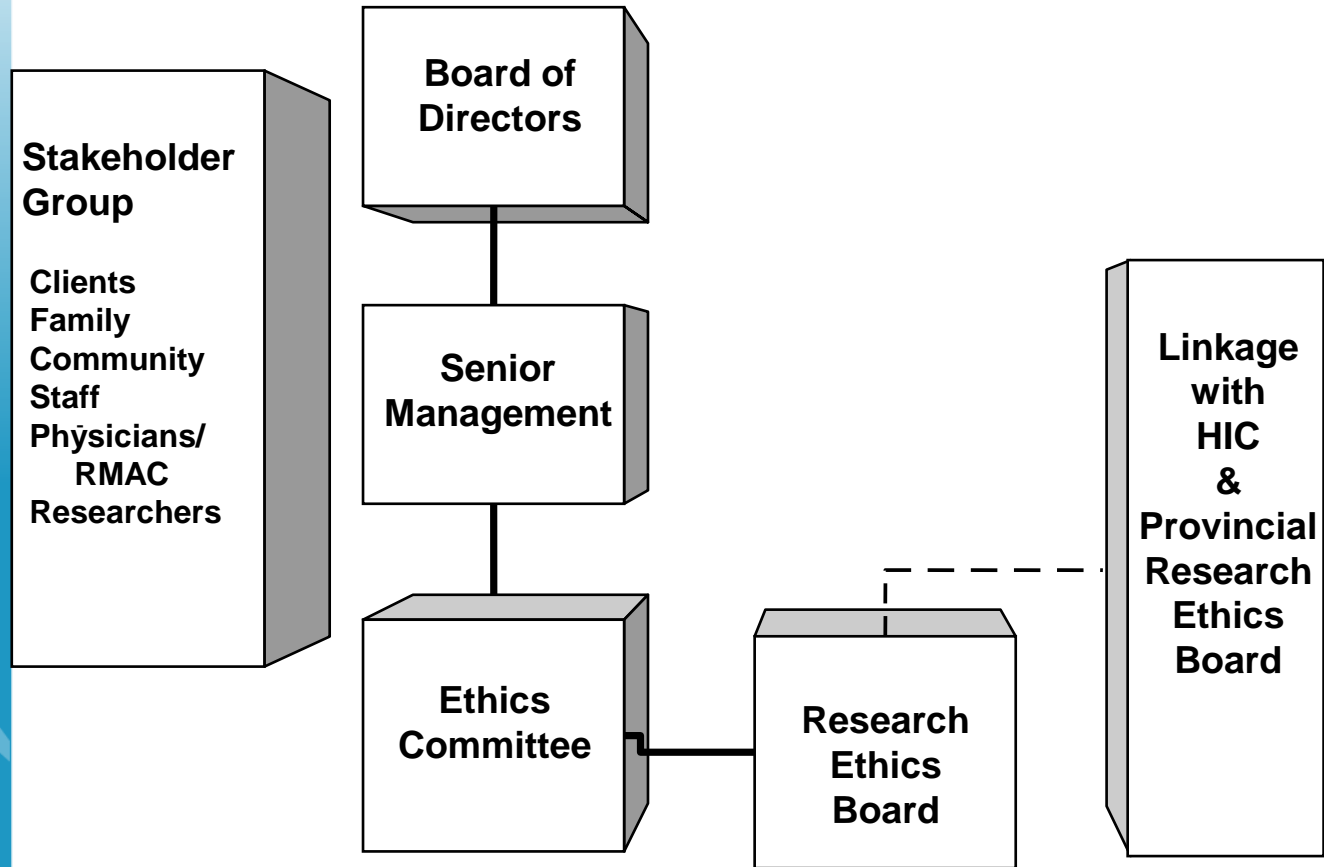
- Population 82, 034 from mostly rural communities
- Employs approximately 2800 staff
- 20 Community Based Offices
- 22 Medical Clinics
- Two Hospitals
- Four Health Centers
- Three Long Term Care Centers





Organizational Chart

(Reporting & Accountability)



Terms of Reference

- Potential risks to participants are minimal
- Level of risk is minimized
- Target population selection/recruitment is sound
- Informed consent is obtained

Terms of Reference

- Research data is kept confidential
- Safeguards are in place
- There is no obvious conflict of interest
- Directors impacted by research are aware of affect on resources

Review Process

- All proposed research involving staff, residents, and clients is submitted to REB
- REB chair decides if a proposal is to receive Exempt, Expedited or Full Review



Strengths of the REB

- Ethics Framework
- Committee Members
- Small size
- Personal/Professional Relationships

Strengths of the REB

- Respond to submissions in a timely manner
- Partnership with Human Investigation Committee



Challenges & Gaps

- Workload
- Distinguishing between QI/QA and need for REB approval
- Recruitment and Retention of qualified members
- Proposal Readiness for REB approval

Challenges & Gaps

- Management of Adverse Drug Reaction (ADR) Reports
- Education for REB Members

Implementation Strategies

- Deadline for Research Ethics Board Submission
- Provincial Health Research Ethics Authority (HREA)
- Nomination of REB members
- Partnership with Provincial Agencies such as NLCAHR and HIC
- REB Education

Future Directions

- To develop SAE reporting template
- To develop an orientation package for REB members
- To ensure ongoing education



Questions???

